

YVL77000 VHF & DAB 7 Elements Log Periodic

VHF
Band III TV
DAB / DAB+

Operative Frequency
174-240 MHz

Input Size:
EIA 7/8"

ELECTRICAL CHARACTERISTICS

Frequency Range	174 - 240 MHz
Input impedance	50 OHM
Polarization (depends on mounting)	Vertical/Horizontal
Gain	6 dBd (@ 200 MHz)
VSWR	<1.2
Max input Power	2.5 kW
all metal parts are ground connected	

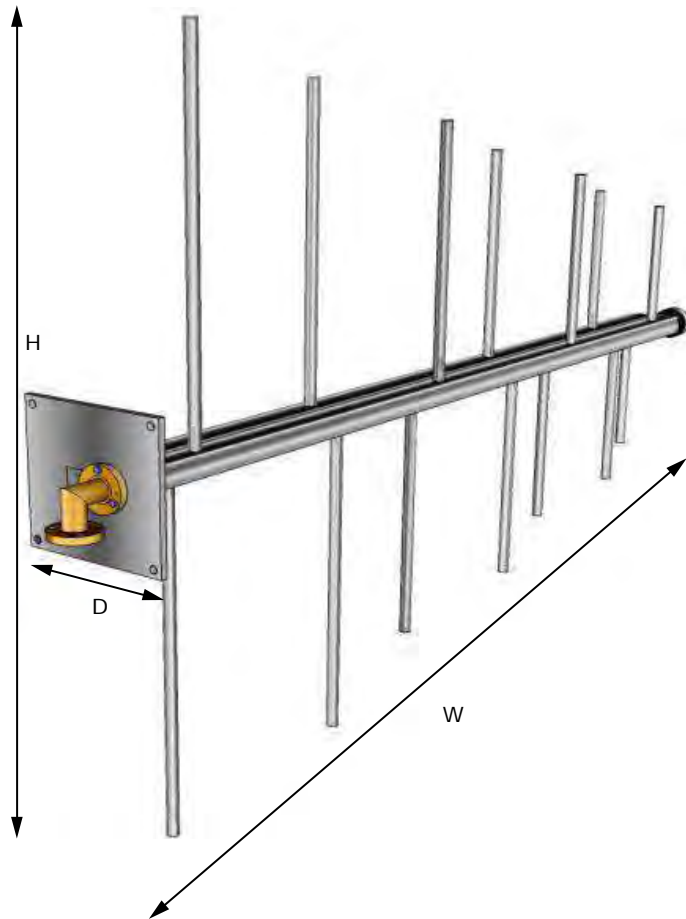
all metal parts are ground connected

MECHANICAL CHARACTERISTICS

Input Connector	EIA 7/8"
Weight/Mass	137 N (14 Kg 31 lbs)
Wind loads (wind=160 Kph)	130 N (Front thrust) 400 N (Side thrust)
Max Wind (survival)	200 Kph
Operating temperature	-50°C to +70°C
Pressurization	100 KPa (1 Atm)
Mounting:	Pole Brackets Ø 50-114 pole

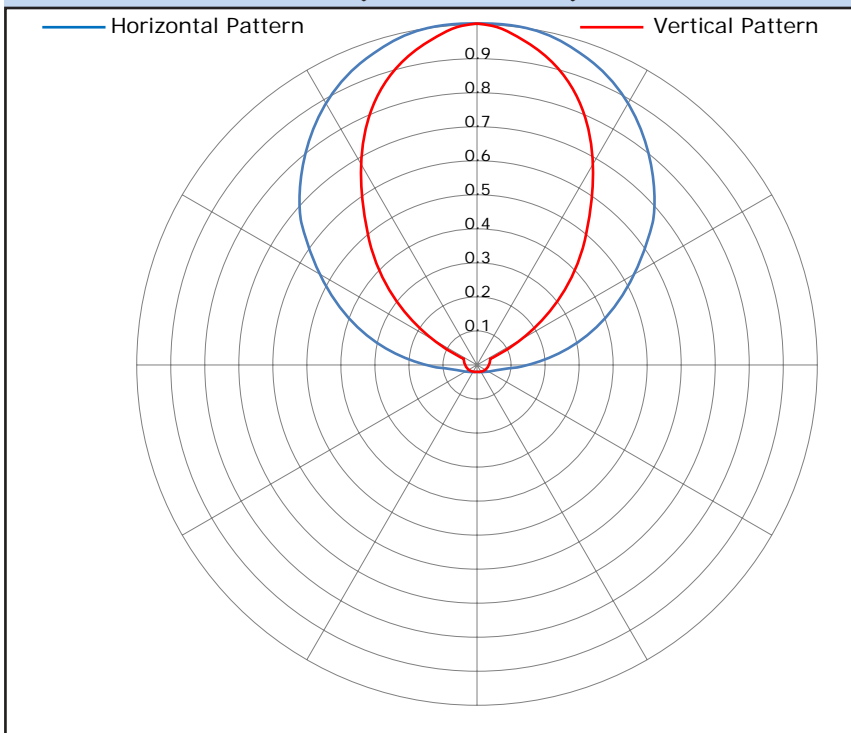
Materials

External parts/Brackets	Stainless Steel
Internal Lines/ Dipoles	Silver Plated Alu/Brass
Hardware	Stainless Steel



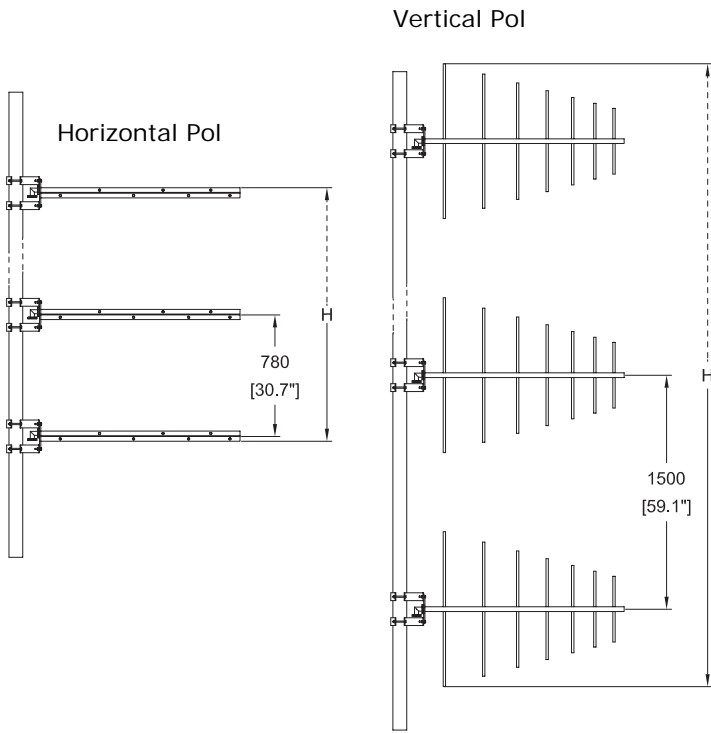
H: 992 mm [39.1"] W: 1339 mm [52.7"] D: 180 mm [7.1"]

RADIATION PATTERNS (VERTICAL POL.)



YVL77000 VHF & DAB 7 Elements Log Periodic- Typical Antenna Systems Patterns

Arrays Data Table



Horizontal Pol.			
Bays (Nr)	Gain (dBd)	Height (m/ft)	Weight (kg/lbs)*
1	6	0.18 (0.6)	14 (30.9)
2	9	0.96 (3.1)	28 (61.7)
3	10.8	1.74 (5.7)	42 (92.6)
4	12	2.52 (8.3)	56 (123.5)
6	13.8	4.08 (13.4)	84 (185.2)
8	15	5.64 (18.5)	112 (246.9)
12	16.8	8.76 (28.7)	168 (370.4)

Vertical Pol.			
Bays (Nr)	Gain (dBd)	Height (m/ft)	Weight (kg/lbs)*
1	6	0.992 (3.3)	14 (30.9)
2	9	2.492 (8.2)	28 (61.7)
3	10.8	3.992 (13.1)	42 (92.6)
4	12	5.492 (18)	56 (123.5)
6	13.8	8.492 (27.9)	84 (185.2)
8	15	11.492 (37.7)	112 (246.9)
12	16.8	17.492 (57.4)	168 (370.4)

*Supporting Pole, Cables, Power Dividers NOT considered

E/EM Vertical Radiation Patterns

