

# OVV72000-OVVX2000 VHF & DAB 4 Dipoles Omni Antenna

VHF  
Band III TV  
DAB / DAB+

Operative Frequency  
174 - 240 MHz

Input Size:  
EIA 7/8" - DIN 7-16

## ELECTRICAL CHARACTERISTICS

Frequency Range	174 - 240 MHz
Input impedance	50 OHM
Polarization	Vertical
Gain	4.5 dBd (@ 207 MHz)
VSWR	<1.2
Max input Power OVV72000	3 kW
Max input Power OVVX2000	1 kW

all metal parts are ground connected

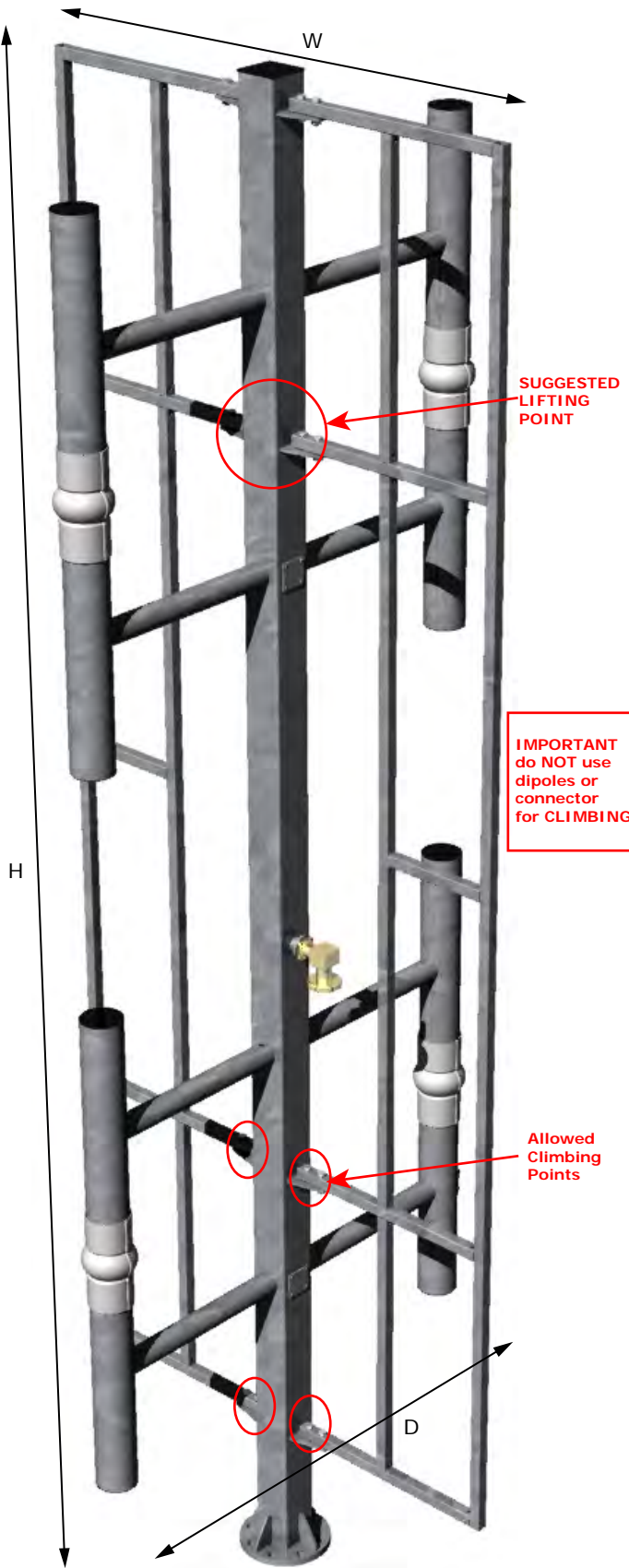
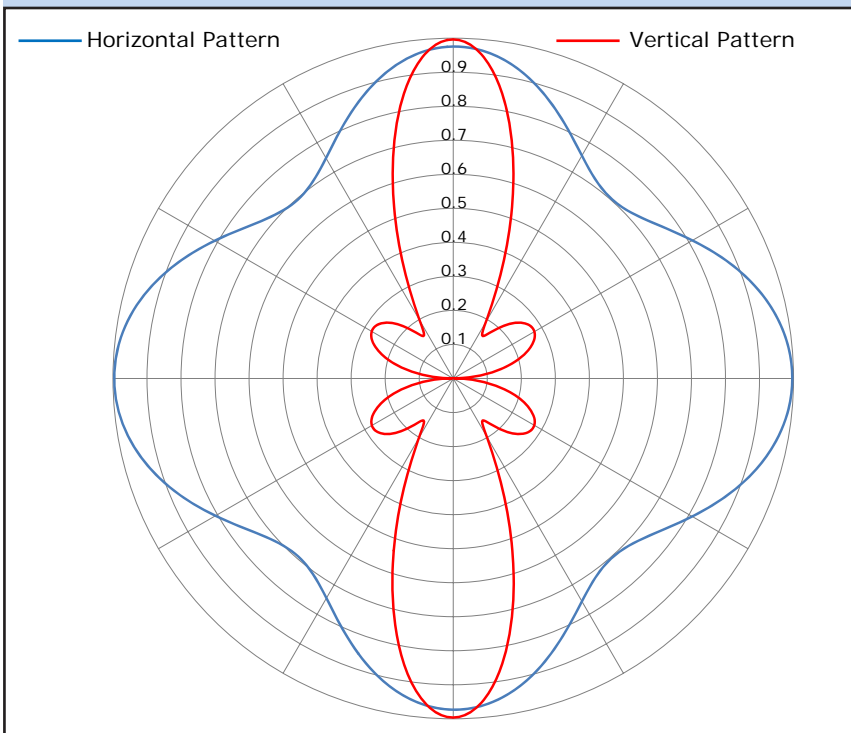
## MECHANICAL CHARACTERISTICS

Input Connector OVV72000	EIA 7/8"
Input Connector OVVX2000	7-16 DIN female
Weight/Mass	588.6 N (60 Kg   132 lbs)
Wind loads (wind=160 Kph)	1099 N
Max Wind (survival)	220 Kph
Operating temperature	-50°C to +70°C
Pressurization (NOT for 7-16 input version)	100 KPa (1 Atm)
Mounting on tower top/ pole top	Dedicated flange (see detail for dimensions)

## Materials

External parts	Hot Dip Galvanized Steel
Internal Lines/ Dipoles	Silver Plated Alu/Brass
Hardware	Stainless Steel
Radomes	Fiberglass

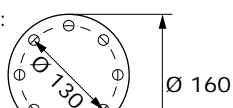
## RADIATION PATTERNS



H: 2604 mm [102.5"] W: 900 mm [35.4"] D: 870 mm [34.3"]

Flange details:

# 8 holes  
Ø 14 mm



I dati contenuti nel presente datasheet possono variare senza preavviso  
Data on this datasheet can vary without previous notice

09/21