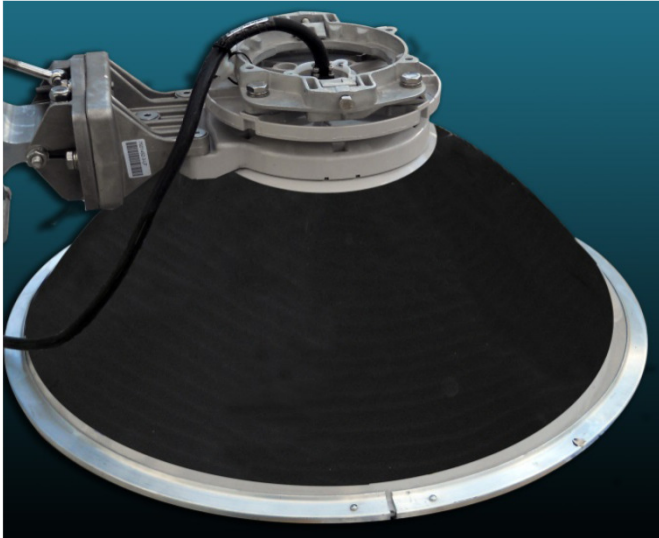


"PSE" DE-ICING SYSTEM



| | | | |
|------------------------|-----------|----------|------------------------|
| DC/AC 220V (or 48V) | Ø 0.3m-3m | PSE type | In factory retrofit |
|------------------------|-----------|----------|------------------------|

MAIN FEATURES

Electrical characteristics

| | |
|---------------------|--|
| Power Supply | 220 Vac / Vdc (or 48 Vac / Vdc) |
| Power Consumption | 400 W/m ² 1000 W/m ² (HighPower ver.) |
| Temperature control | Manual |
| Safety | Safety thermostat |

Mechanical characteristics

| | |
|---------------------|---|
| Survival wind speed | 200 Km/h |
| Temperature range | -20°C - +60°C -35°C - +70°C (HighPower ver.) |

Materials

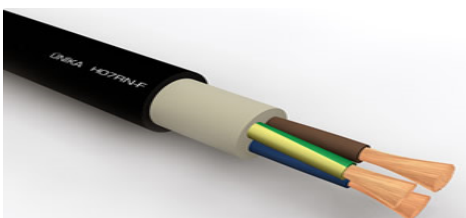
| | |
|---------------------|--------------------------|
| Internal | Glued alluminum |
| Heating | Carbon fiber cable |
| Insulation/external | Dual felt fire resistant |

High or Low Voltage power supply. it is designed to fit any microwave dish from any vendor .

It is applied in our factory as a retrofit on a new antenna and is fitted with self regulating systems or with temperature sensor and thermostat.

It is composed by a special designed heating element, UV and corrosion resistant with internal insulation for a better heat distribution, carbon finer cable for long-life durability. Firmly glued on the parabolic reflector and specially designed to guarantee the wind speed survival.

Power supply cables type H07RN for open air use compliant to CEI 64-8 p. 7 rule.



Product Sample

