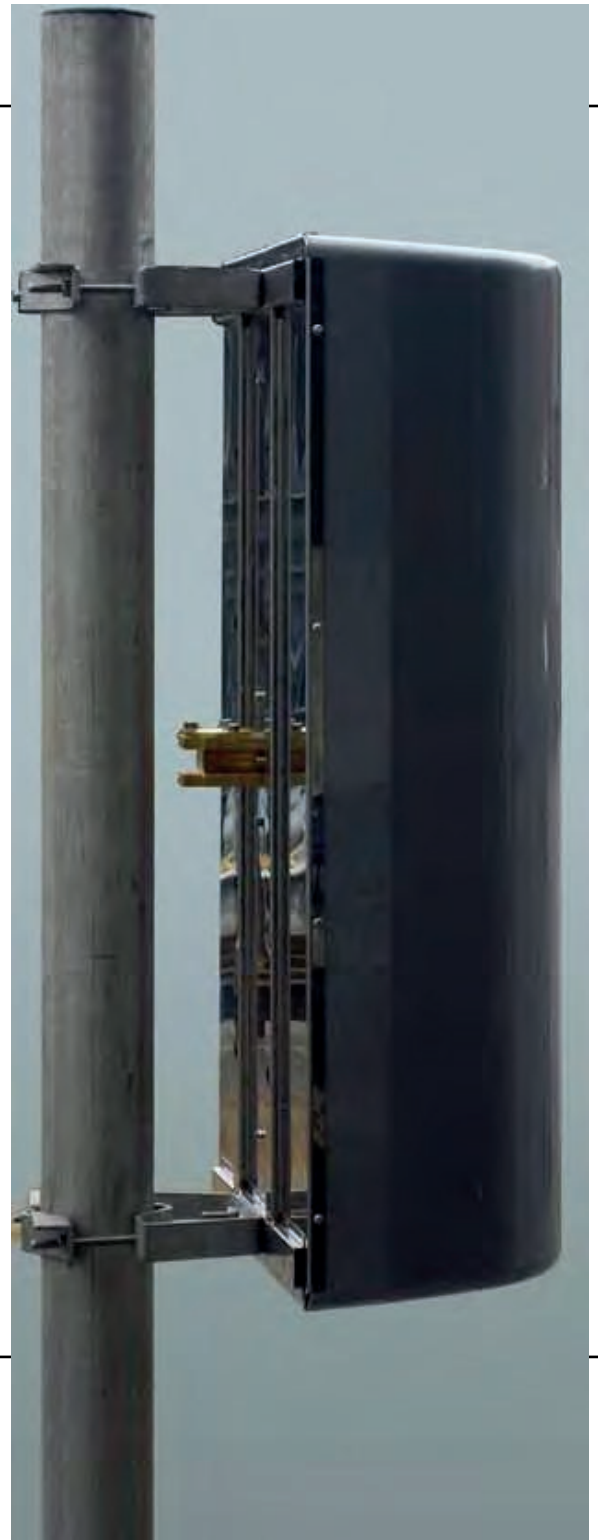
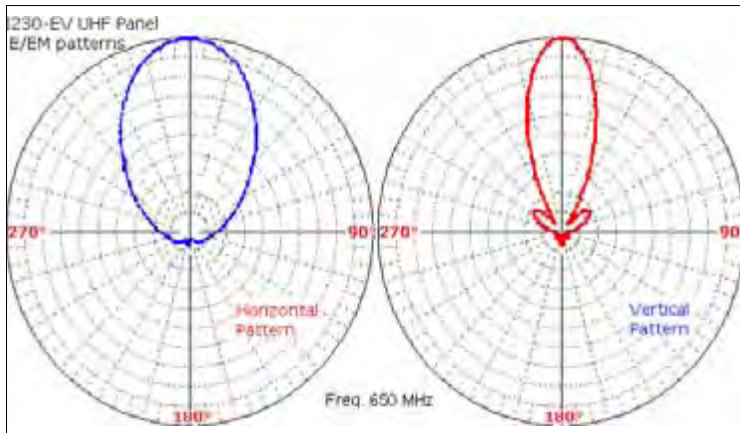


VERTICAL Polarization 4 Dipoles Panel

Technical data

Product Code	XA246200
ELECTRICAL CHARACTERISTICS	
Frequency Band	470-860 MHz
Polarization	Vertical
Gain	9.5 dBd (@ 650 MHz)
F/B Ratio	20 dB
V.S.W.R.	1.1 (1.08 Typical)
HPBW E Plane (deg.)	60 (@ 650 MHz)
HPBW H Plane (deg.)	30 (@ 650 MHz)
Max Input Power	2.5 KW (@ 650 MHz)
Voltage Breakdown	10 KV
All metal parts are ground connected	



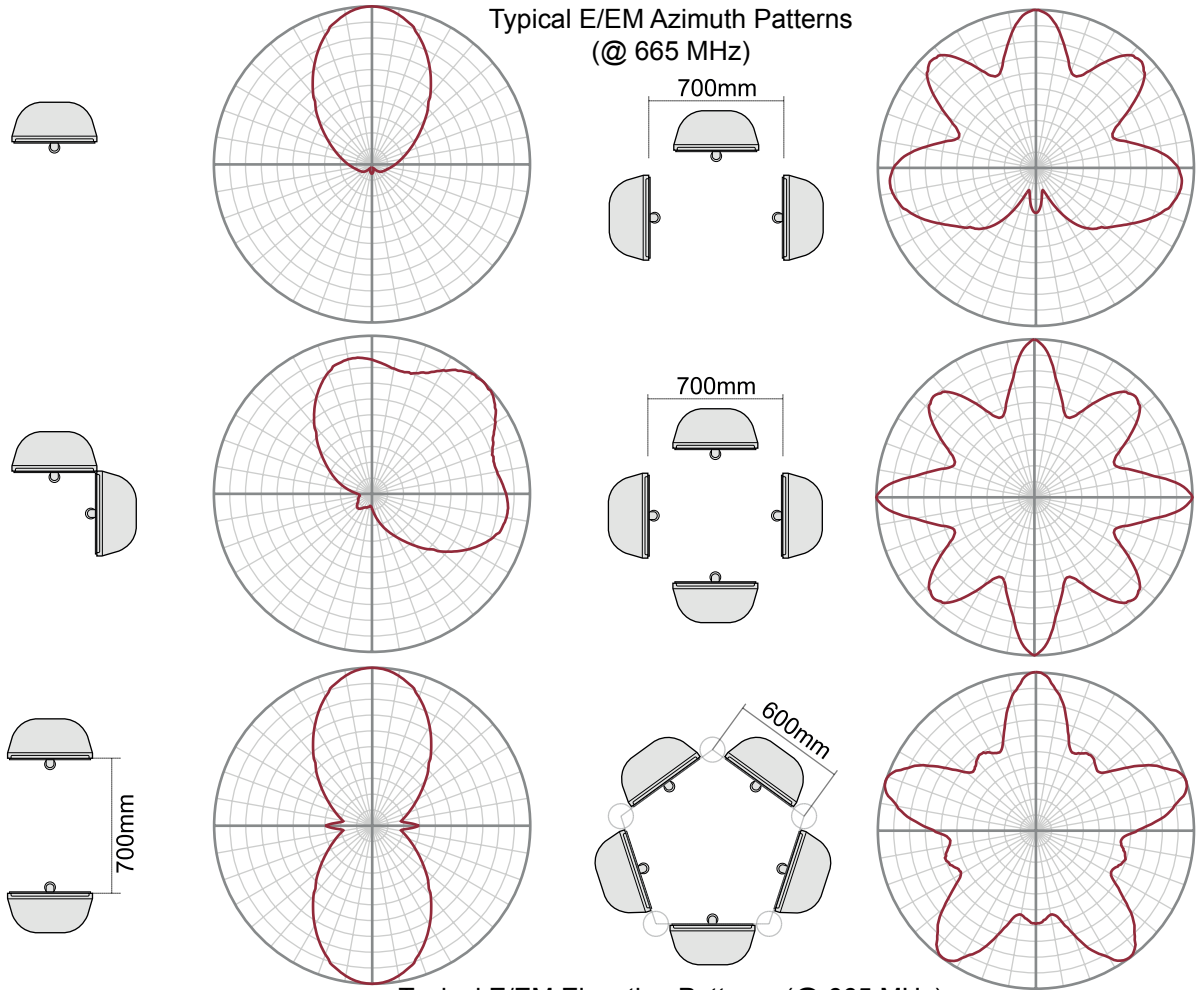
MECHANICAL CHARACTERISTICS	
Input Flanges Nr /Size	EIA 7/8"
Dimensions (HxWxP)	820 x 450 x 240 mm
Weight/Mass	113 N / 11.5 Kg
Wind loads (wind=160 Kph)	Front: 510 N Side: 310 N
Max Wind	200 Kph
Operating temperature	-50°C to +60°C
Pressurization	100 KPa (1 Atm)
Mounting	-Tower face -Ø 60 to 160 mm Pole Brackets -Custom Mast



MATERIALS	
Stainless Steel AISI 304	
Inner lines / dipoles	Silver plated Brass/copper
Radome	Grey Standard Fiberglass Other colours on request

X0ÜV00Š Polarization UHF Panel - Typical Radiation Patterns

Typical E/EM Azimuth Patterns
(@ 665 MHz)



Typical E/EM Elevation Patterns (@ 665 MHz)

