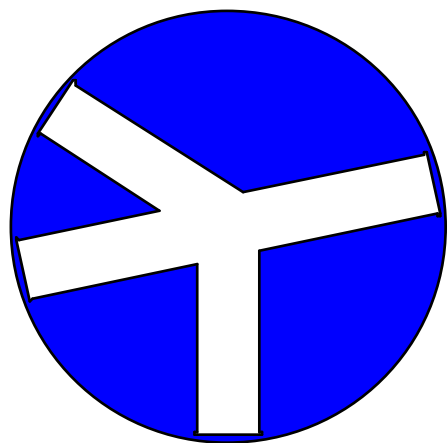


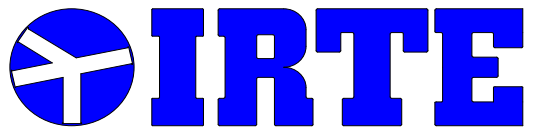
www.irte.it / sales@irte.it



IRTE

**Via Pompei, 35
21013, GALLARATE (VA)
ITALY**

www.irte.it



www.irte.it / sales@irte.it

IRTE S.p.A.

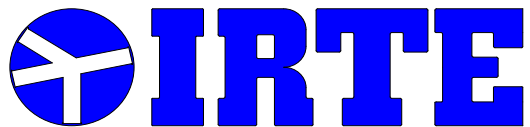
- Established in **1970**
- Active in a wide range of activities
- Two main divisions:

-BROADCASTING division

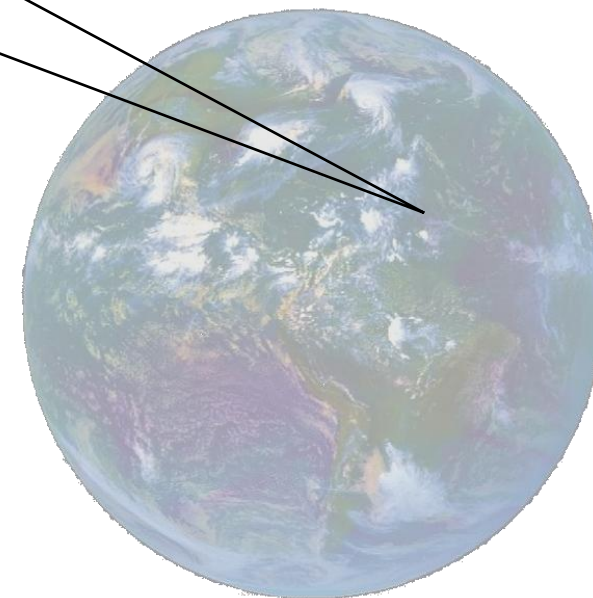
-TELECOM division

- **3** development Labs
- **120** direct employees
- **200** external consultants

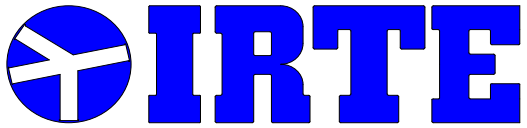




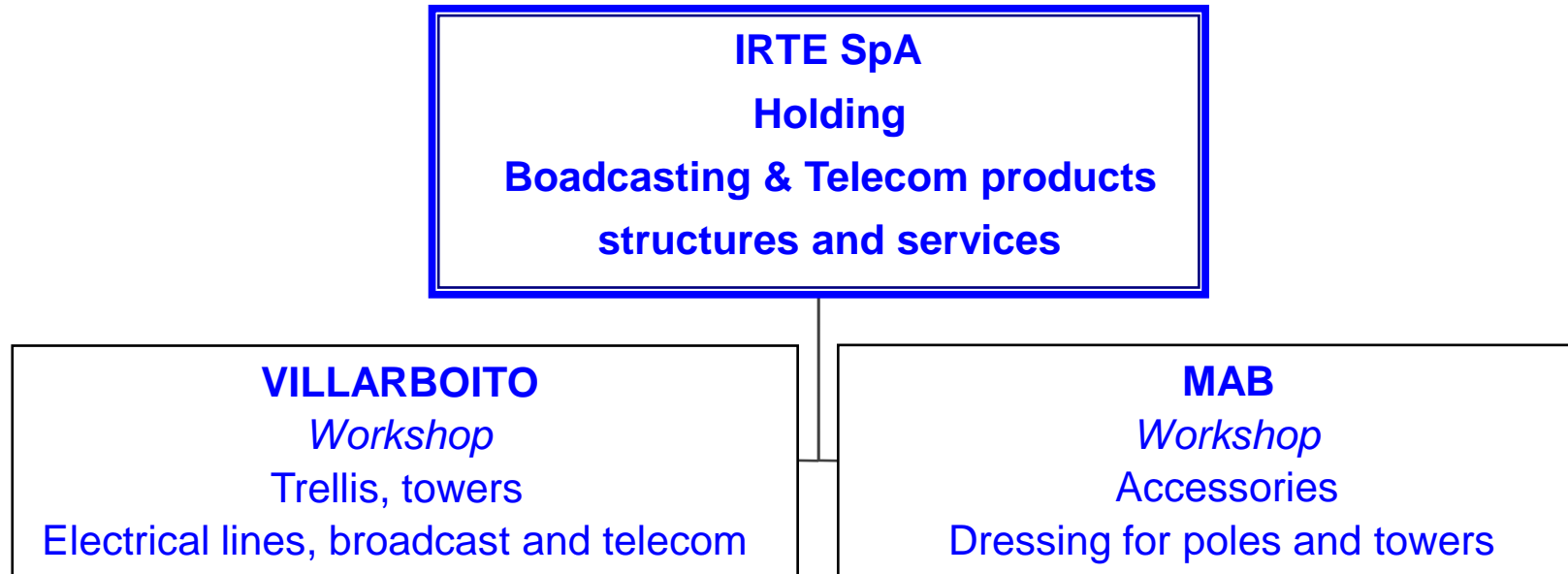
www.irte.it / sales@irte.it



- **Head office**
 - Gallarate (VA)
- **Work-shops**
 - Busto Arsizio (VA) – Dishes, panels, feedhorns, camouflages
 - Novara (NO) – Lattice towers, trellies
 - Veruno (NO) – Poles dressing, specials
- **International office**
 - IRTE International UK



www.irte.it / sales@irte.it



With such an organization IRTE S.p.A. is able to respond to Customer's requests as a unique reference-partner for telecommunications devices and infrastructures.

TOWER Manufacturing Facility



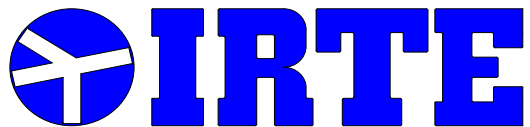
- **38500 sqm**
- **500 ton/month capacity**
- **Highly automated computer controlled machinery**

Main CUSTOMERS

- TERNA (ENEL, main italian power supply company)
- SIEMENS
- ERICSSON
- DB (German Railways)
- RFI (Italian Railways)
- RAI-RAIWAY (public italian TV)
- MEDIASET (major private italian TV broadcaster)
- MAIN ENERGY SUPPLIER COMPANIES (Austria, Germany)



TURNOVER
7 Mil. €



www.irte.it / sales@irte.it

POLES Manufacturing Facility



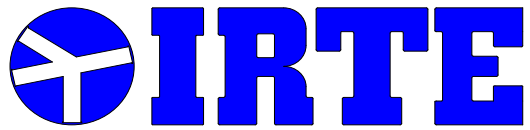
- **Heavy metal works**
- **Special products**
- **Pole dressing**
- **Customization**



Main CUSTOMERS

- VODAFONE
- TELECOM ITALIA
- H3G
- SITE
- RFI (Italian Railways - GSM-R)

TURNOVER
2 Mil. €



WIND ENERGY

SELF SUPPORTING STRUCTURES FOR WIND MILLS UP TO 50KW

Design

Our engineers design the self supporting structures according to wind mills requirements in terms of static and dynamic load.

The design is developed through the collaboration of the wind mills manufacturers.

Possibility of design of poles, towers and mast for any type of wind mill.

Manufacturing

After the design process is defined, the manufacturing process begins.

The manufacturing process is performed in our own workshops (with state of the art machineries) and specialized workmanship (welders and mechanics).



Self supporting polygonal pole

Type: slip-on-joint (3 pieces)

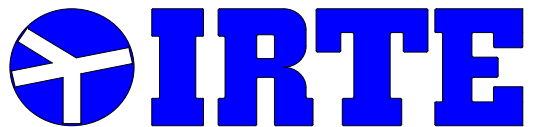
Height: 24mt or 30mt

Wind mill connection: flanged piece
(CNC machined flanges for high
precision planarity)

Material: hot dip galvanized steel

Coating: white paint (other colors
possible)





www.irte.it / sales@irte.it

IRTE S.p.A.

Via Pompei 35
21013, Gallarate (Va)
Italy

Contacts:

Phone: 0331-797286 / 0331-796054

Fax: 0331-776082

Web: www.irte.it

E-mail: sales@irte.it